



29.11.2024 / 97-9724

www.hwam.com



TABLE OF CONTENTS

TECHNICAL DATA.....	3
In general	3
Safety.....	3
Room requirements	3
Technical measures and data - HWAM 5610 right hinged door	4
Technical measures and data - HWAM 5610 left hinged door.....	4
Technical measures and data - HWAM 5630 right hinged door	5
Technical measures and data - HWAM 5630 left hinged door.....	5
Technical measures and data - HWAM 5650 right hinged door	6
Technical measures and data - HWAM 5650 left hinged door.....	6
Technical measures and data - HWAM 5670 right hinged door	7
Technical measures and data - HWAM 5670 left hinged door.....	7
Type plate and serial number	8
Floor plate	9
Requirements for chimney and flue duct.....	9
 INSTALLATION AND CONNECTION.....	10
In general	10
Installation in rooms with non-combustible material	10
Installation in rooms with combustible material.....	10
Illustrations regarding distance requirement - right hinged door	11
Illustrations regarding distance requirement - left hinged door.....	13
Procedure for top outlet connection.....	15
Procedure for back outlet connection.....	18
Product information EcoDesign.....	23

TECHNICAL DATA

In general

Congratulations on your new HWAM woodburning stove. We are pleased that you have chosen a HWAM woodburning stove and confident that it will give you much pleasure. To ensure optimum operation and safety, we recommend that the installation should be carried out by an authorised HWAM retailer or a fitter recommended by the retailer. For an overview of HWAM retailers, visit www.hwam.com under "Retailer locations".

Safety

The installation of your HWAM woodburning stove must always comply with all European, national and local building regulations. The installation must be carried out in accordance with the instructions in the installation and user manuals and subsequently registered with the local authorities. Upon installation, the chimney sweep must approve the installation before you can start using the woodburning stove. All HWAM stove packaging material must be handled in accordance with local waste management regulations.

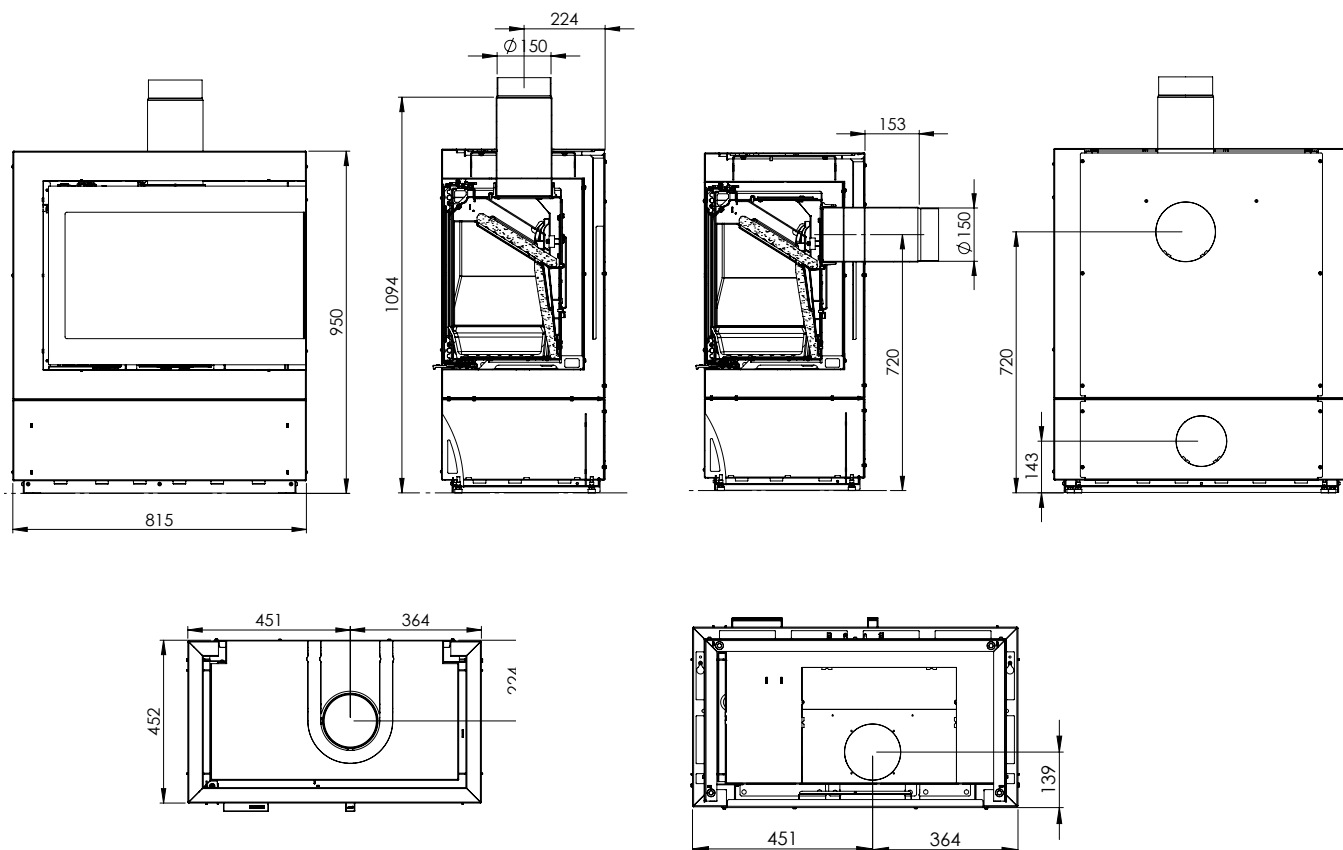
Room requirements

Always ensure a supply of fresh combustion air to the room where the stove is to be installed. The woodburning stove uses approx. 10-21 m³ of air per hour (depending on the setting of the air control lever). A window that can be opened or an adjustable air valve will be sufficient. It must not be possible to block the adjustable air valve/grate. In newly built/airtight dwellings, we recommend that a fresh air system should be installed for the direct supply of external air to the combustion. This fresh-air system may be bought separately.

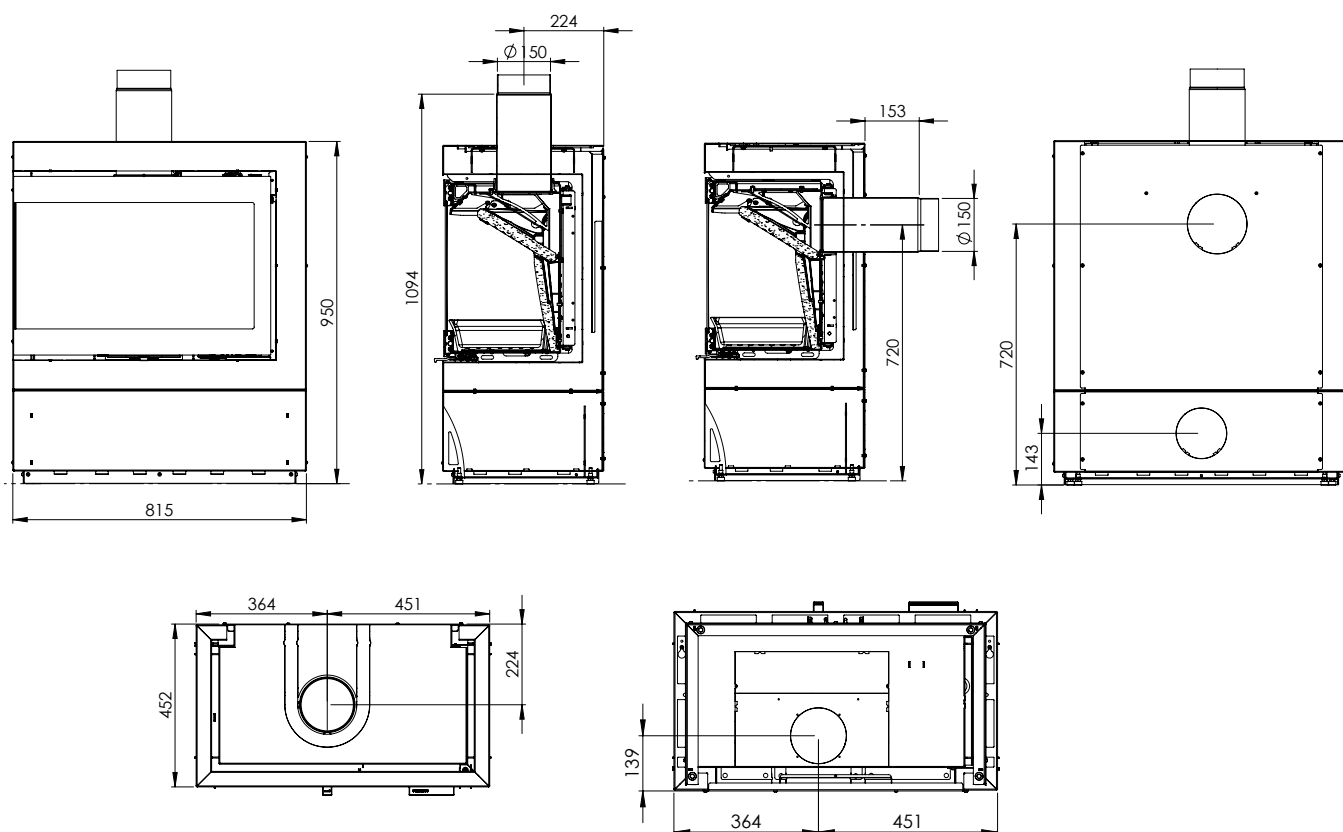
Before installing the stove, you must ensure that the load-bearing capacity of the floor can withstand the weight of the stove and the chimney. The weight of the chimney should be calculated according to its dimensions and height.

Please be aware that not all glass parts are heat-resistant. For this reason, a glass wall should sometimes be treated as a flammable wall, in which case we ask you to contact your local chimney sweep or glass producer to hear at what distance the woodburning stove should be kept from glass.

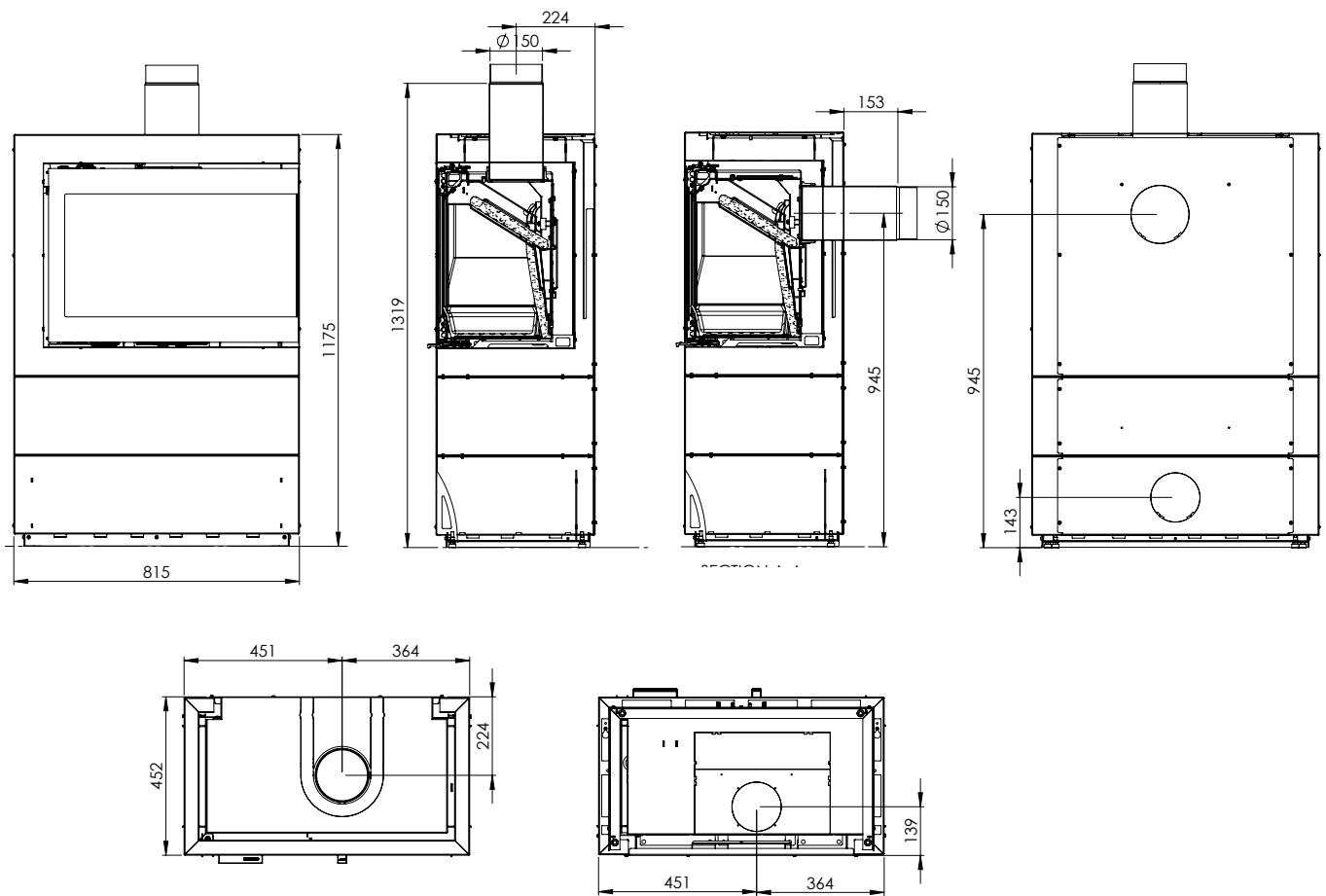
Technical measures and data - HWAM 5610 right hinged door and top or back outlet



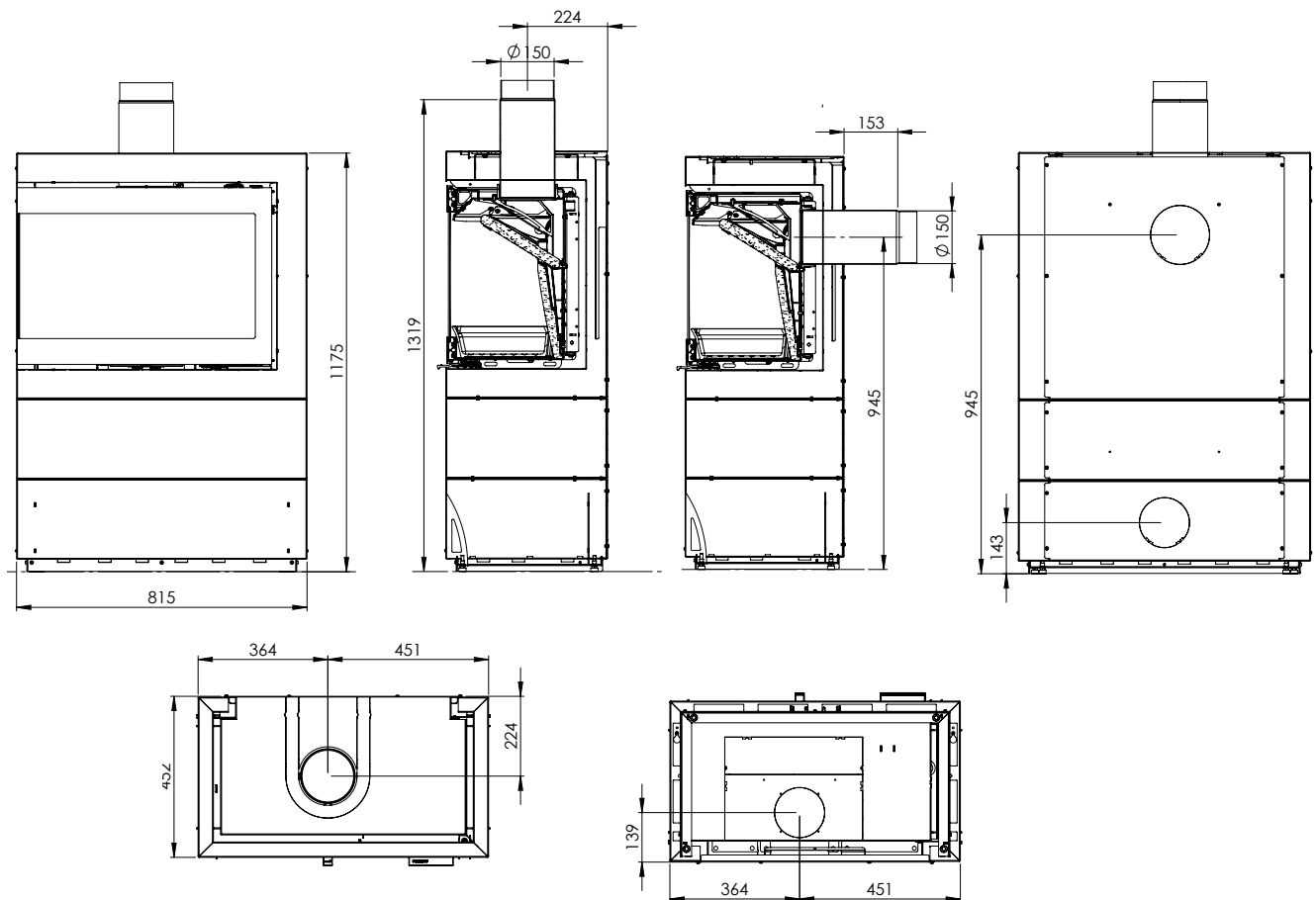
Technical measures and data - HWAM 5610 left hinged door and top or back flue outlet



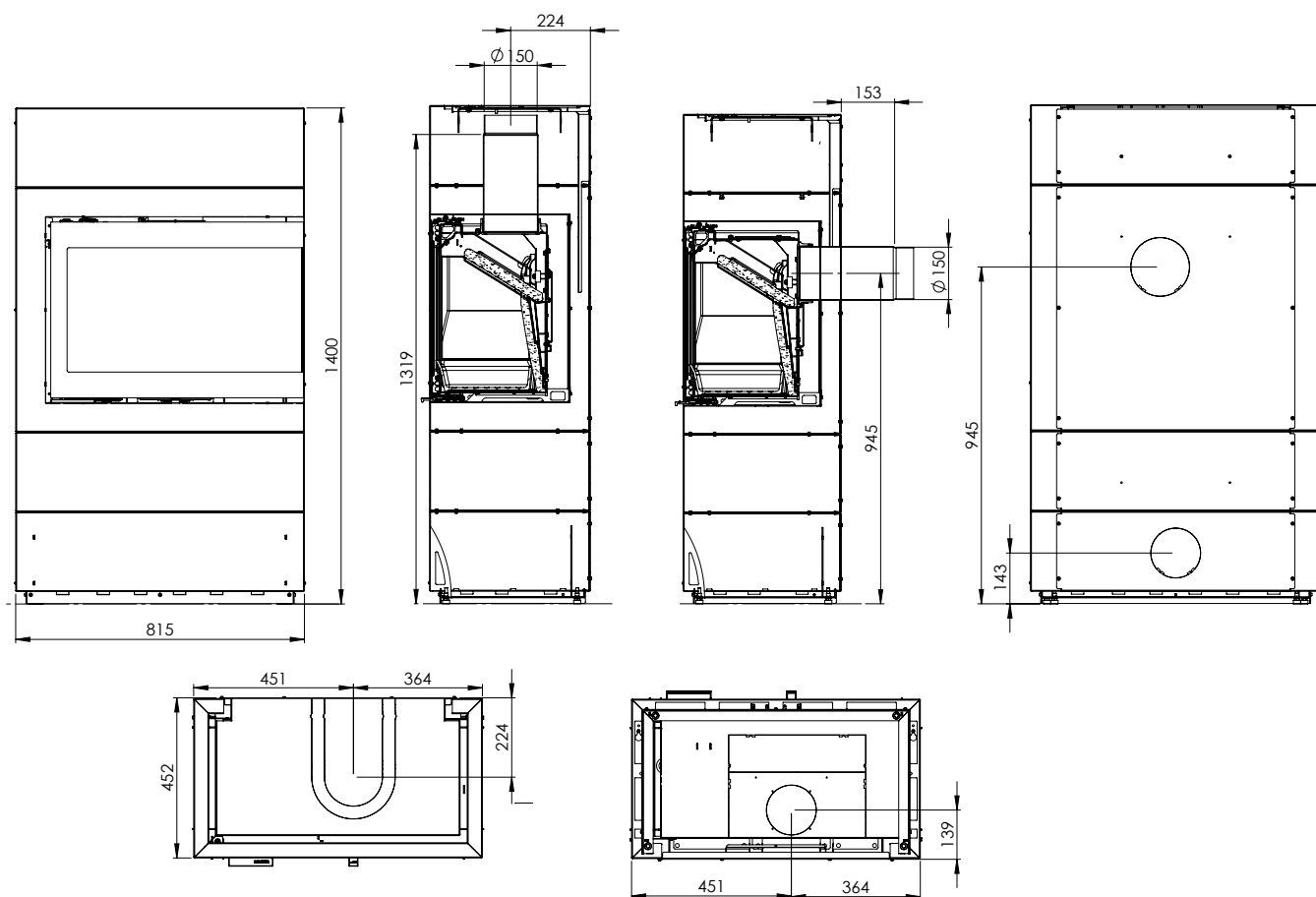
Technical measures and data - HWAM 5630 right hinged door and top or back outlet



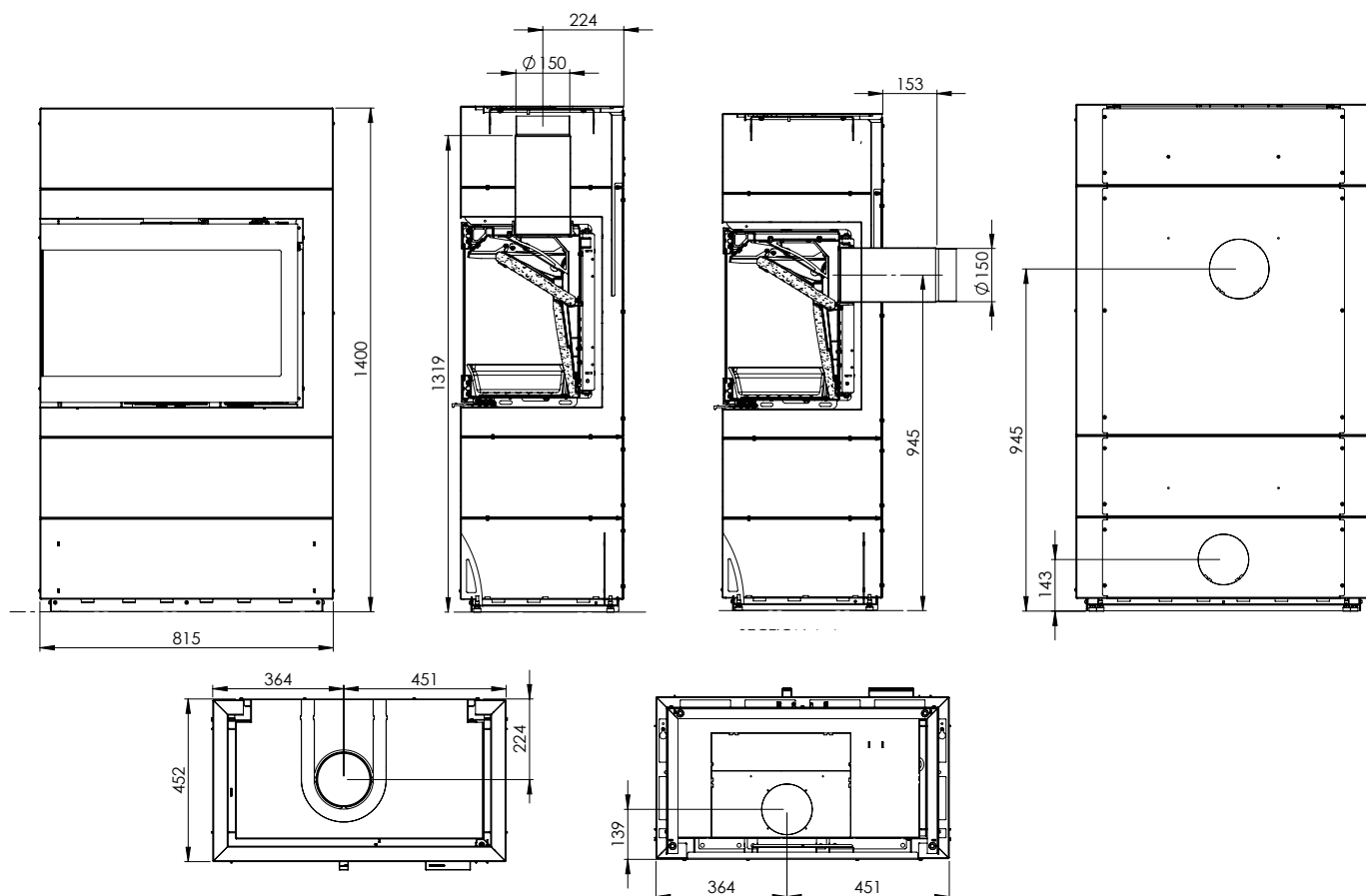
Technical measures and data - HWAM 5630 left hinged door and top or back outlet



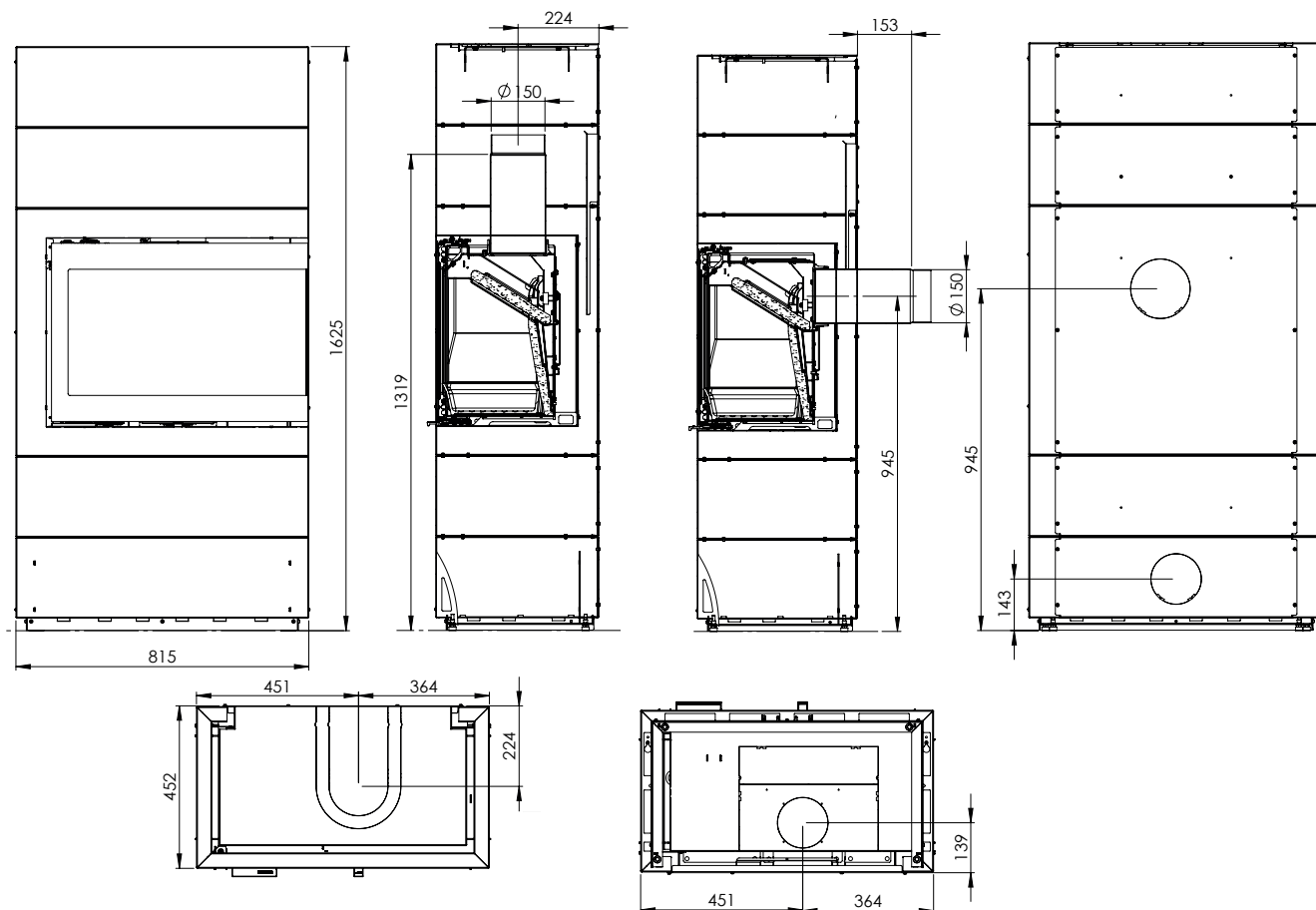
Technical measures and data - HWAM 5650 right hinged door and top or back outlet



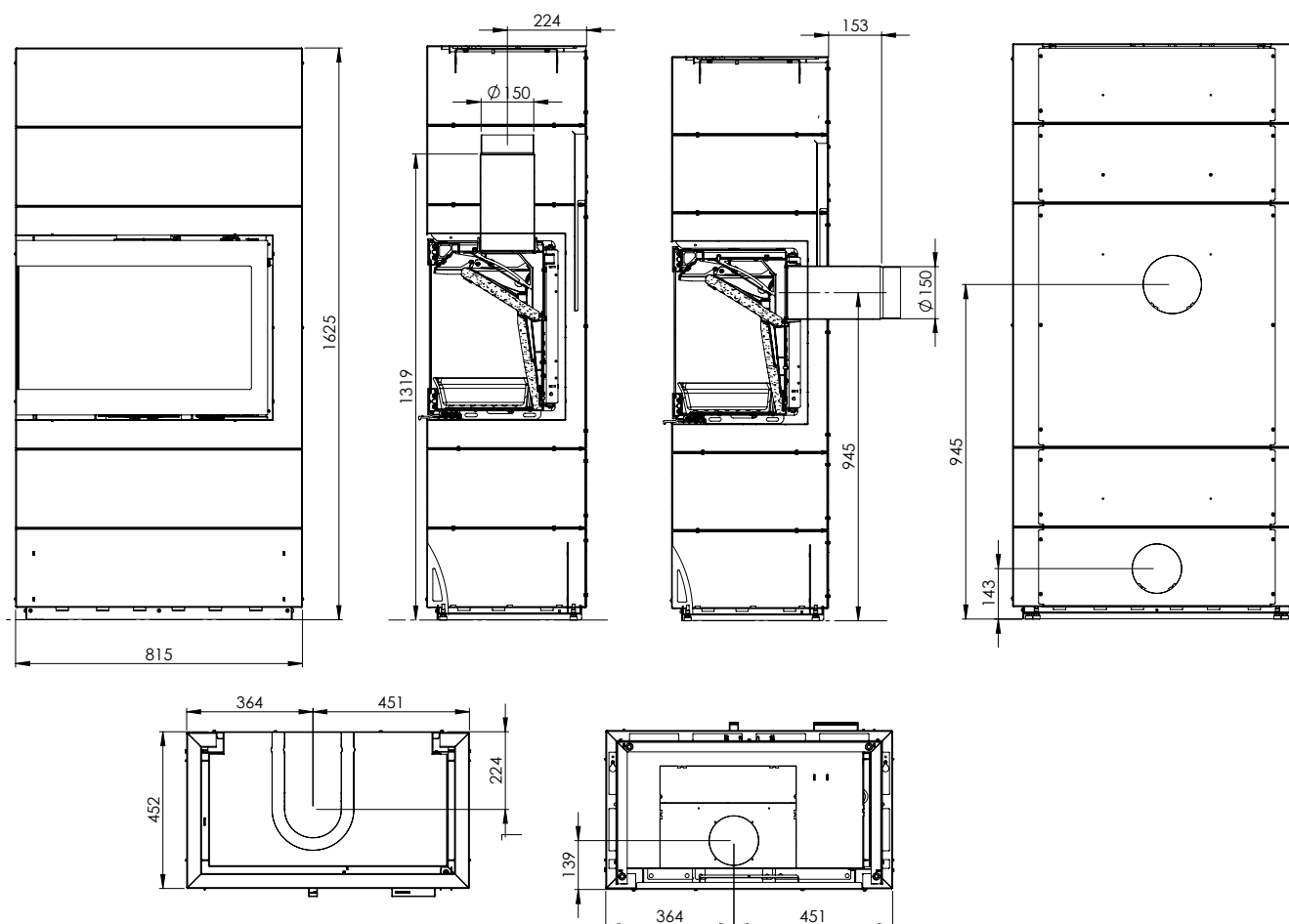
Technical measures and data - HWAM 5650 left hinged door and top or back outlet



Technical measures and data - HWAM 5670 right hinged door and top or back outlet



Technical measures and data - HWAM 5670 left hinged door and top or back outlet




Model	Weight
HWAM 5610c	153 kg
HWAM 5610m	150 kg
HWAM 5630c	164 kg
HWAM 5630m	161 kg
HWAM 5650c	176 kg
HWAM 5650m	173 kg
HWAM 5670c	187 kg
HWAM 5670m	184 kg
Tall module	56 kg
Narrow module without drawer	25 kg
Narrow module with drawer	37 kg
Wide module without drawer	45 kg
Wide module with drawer	55 kg
Heat storage stones HWAM 5650	67 kg
Heat storage stones HWAM 5670	134 kg
Extra module for HWAM 5670	12 kg
Reinforcing floor plate	5 kg

Test results from nominal test EN13240	
Nominal heating effect	7.1 kW
Flue gas temperature EN 13240 measurement point	282°C
Flue gas temperature measured in the outlet socket	337°C
Exhaust gas flow	6.3 g/s
Efficiency	79 %
Annual efficiency (EcoDesign)	69 %
PM	13 mg/m ³
OGC	67 mg/m ³
NOx	95 mg/m ³
CO at 13% O ₂	1056 mg/m ³
CO at 13% O ₂	0.0845 %
Energy efficiency index	105
Energy efficiency class	A

The declaration of performance (DoP) can be downloaded from our website, www.hwam.com.


Type plate and serial number

The type plate and serial number of the wood-burning stove are glued to a pull-out plate between the wood-burning chamber and the side plate.

HWAM 5630

EN 13240-2001 / A2:2004
Roomheaters fired by solid fuel

Roomheater burning solid fuel without water supply
Thermal output: 7.1 kW
Fuel types: wood
Distance to adjacent combustible materials:
- Back: 0 mm
- Side without glass beside stove: 0 mm
- Side without glass in front of stove: 270 mm
- Side with glass: 600 mm
- Front: 1300 mm
Further information see installation instructions
CO Emission at 13% O₂: 0.085 % / 1056 mg/m³
Particulates at 13% O₂: 13 mg/m³
OGC at 13% O₂: 67 mg/m³
NO_x at 13% O₂: 95 mg/m³
Energy efficiency: 79 %
Flue gas temperature EN 13240 measurement point: 282 °C
Flue gas temperature measured in the outlet socket: 337 °C
Surface temperature: Pass
Clearability: Pass
Mechanical resistance (to carry a chimney/flue): Pass
Laboratory registration number: NB 1235
Test report: 300-ELAB-2005-EN 300-ELAB-2000-EN-alk
The appliance is capable of intermittent operation.
The appliance can be used in a shared flue.
Follow the user's manual and use only recommended fuel.
Declaration of Performance: www.hwam.com/dop/5630

HWAM A/S
Nydamvej 53 - DK 8362 Herning
Tel.: (+45) 86 92 18 33
Fax: (+45) 86 92 22 18



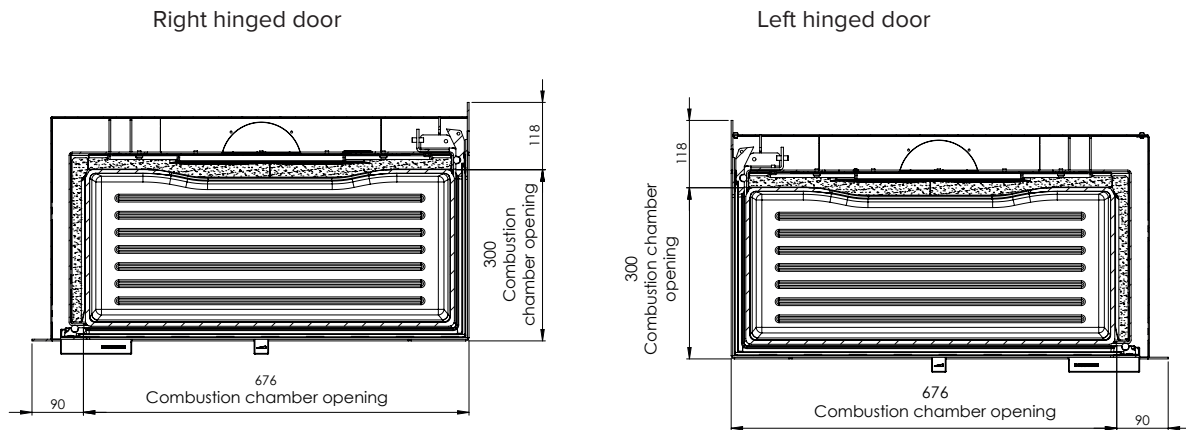
EAN S.nr.:

Locate the unique serial number of your stove and make a note of it below so that it is always easily accessible. The serial number must always be provided when contacting your HWAM retailer.

Serial number (starts with "G4"):

Floor plate

European, national and local regulations must be observed in terms of the size and thickness of a non-combustible floor covering the floor in front of the combustion chamber opening. Ask your HWAM retailer for assistance. Dimensions of the combustion chamber opening can be seen in the illustrations below.



Requirements for chimney and flue duct

The height of the chimney must ensure sufficient draught and prevent any smoke nuisance. As a general rule, satisfactory draught conditions are achieved if the chimney is 4 m above the stove and at least 80 cm above the ridge. If the chimney is placed at side walls, the top of the chimney should always be higher than the ridge or the tallest point of the roof. Always be aware of any national and/or local regulations applying to thatched roofs and the location of the chimneys.

The woodburning stove requires a minimum draught of 12 Pa (measured at EN 13240 measurement point). If measured just above the smoke flue socket, the chimney draught must be 18-20 Pa.

The chimney must have a minimum clearing of Ø150 mm. The chimney must be provided with an easily accessible cleaning door. The chimney and flue duct must be of flue class T400 and be CE marked. Furthermore, it must have obtained the classification of G in soot fire testing. The required distance to combustible material must be complied with in accordance with the brand label. Ask your HWAM retailer for further information.

INSTALLATION AND CONNECTION

In general

If the stove is to be connected to a fresh air system (optional accessory), the fresh air system must be built into the floor or wall before the wood-burning stove is installed. Place heat-storing stone (optional accessories) in the heat compartment after the wood-burning stove has been placed correctly in the room and before connecting the smoke pipe. Follow separate instructions.

A plate can be purchased for weight distribution / reinforcement of the floor (optional accessory), if required due to the weight of the wood-burning stove and any acquired heat-storing stone.

Installation in rooms with non-combustible material

When installing the wood-burning stove up against a non-combustible wall, there are no requirements on the distance to the back or the side of the stove. The general distance requirements appear from the illustrations below.

Installation in rooms with combustible material

When installing the wood-burning stove against a combustible wall, the current distance requirement from the combustible wall to the flue duct must be observed. We recommend looking into the safety distance demands for the chosen flue duct solution before deciding on the final placement of the wood-burning stove.

The minimum distance requirements to combustible materials appear from the chart below and the illustrations on the following three pages.

Min. distances - insulated flue gas pipe:	HWAM 5610+5630	HWAM 5650+5670
1. Non-combustible wall, back	0	0
2. Non-combustible wall, side	0	0
1. Combustible wall, back	0	0
2. Combustible wall, side, next to the stove	0	0
3. Combustible wall, side, in front of the stove	27 cm	27 cm
4. Distance to furnishings in front	130 cm	130 cm
5. Distance to furnishings side	80 cm	80 cm
6. Fireproof wall, side, in front of the stove	5 cm	5 cm
7. Length of fireproof wall to the front of the stove	85 cm	85 cm
From floor to combustible ceiling	215* cm	237,5* cm

* When installing an extra module, the distance is increased by 22.5 cm

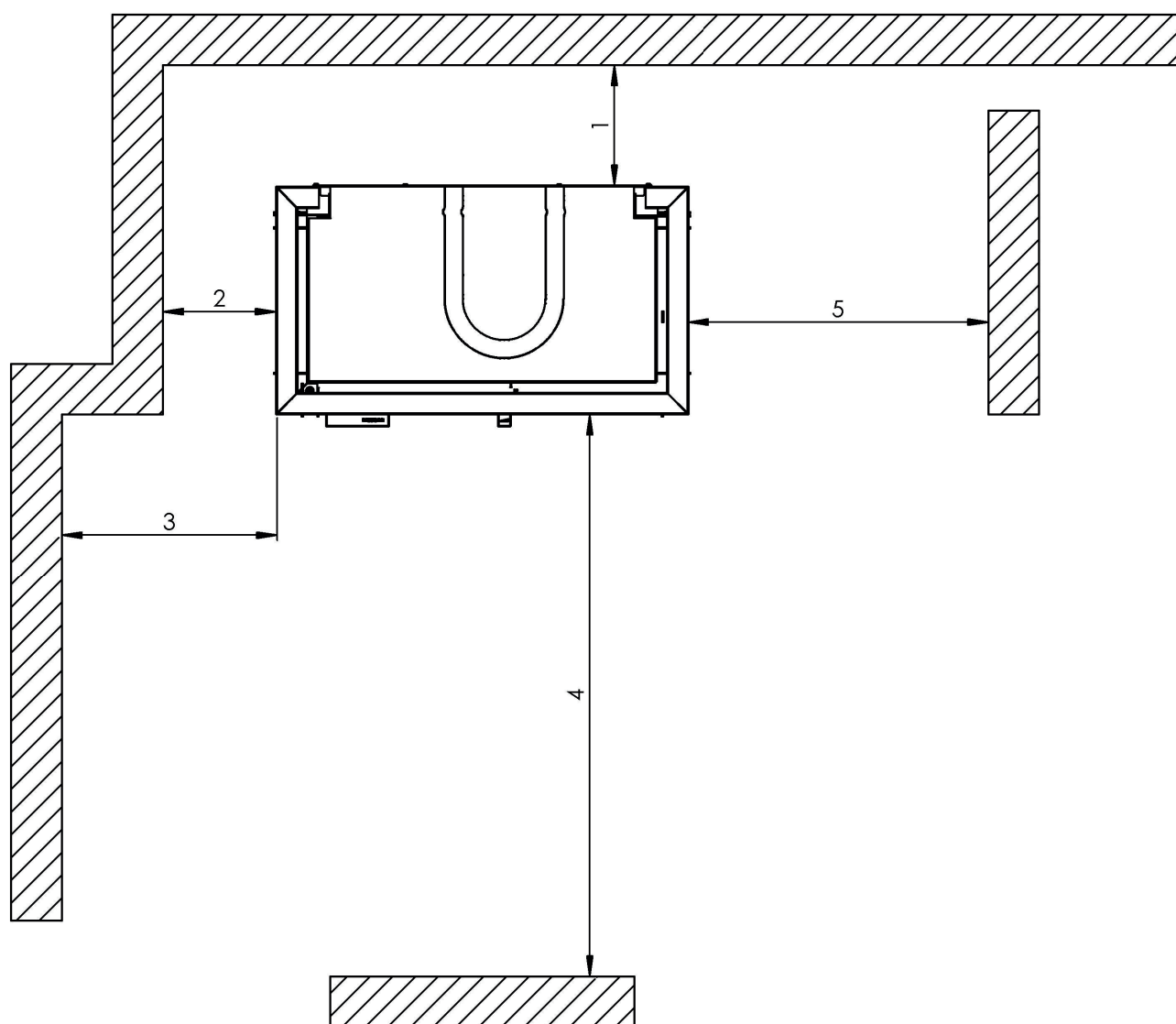
Min. distances - uninsulated flue gas pipe:	HWAM 5610 + 5630	HWAM 5650 + 5670
1. Non-combustible wall, back	0	0
2. Non-combustible wall, side	0	0
1. Combustible wall, back	10 cm	5 cm
2. Combustible wall, side, next to the stove	5 cm	5 cm
3. Combustible wall, side, in front of the stove	27 cm	27 cm
4. Distance to furnishings in front	130 cm	130 cm
5. Distance to furnishings side	80 cm	80 cm
6. Fireproof wall, side, in front of the stove	5 cm	5 cm
7. Length of fireproof wall to the front of the stove	85 cm	85 cm
From floor to combustible ceiling	215* cm	237,5* cm

* When installing an extra module, the distance is increased by 22.5 cm

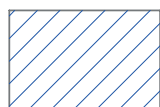
Illustrations regarding distance requirement - right hinged door



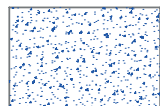
Combustible material



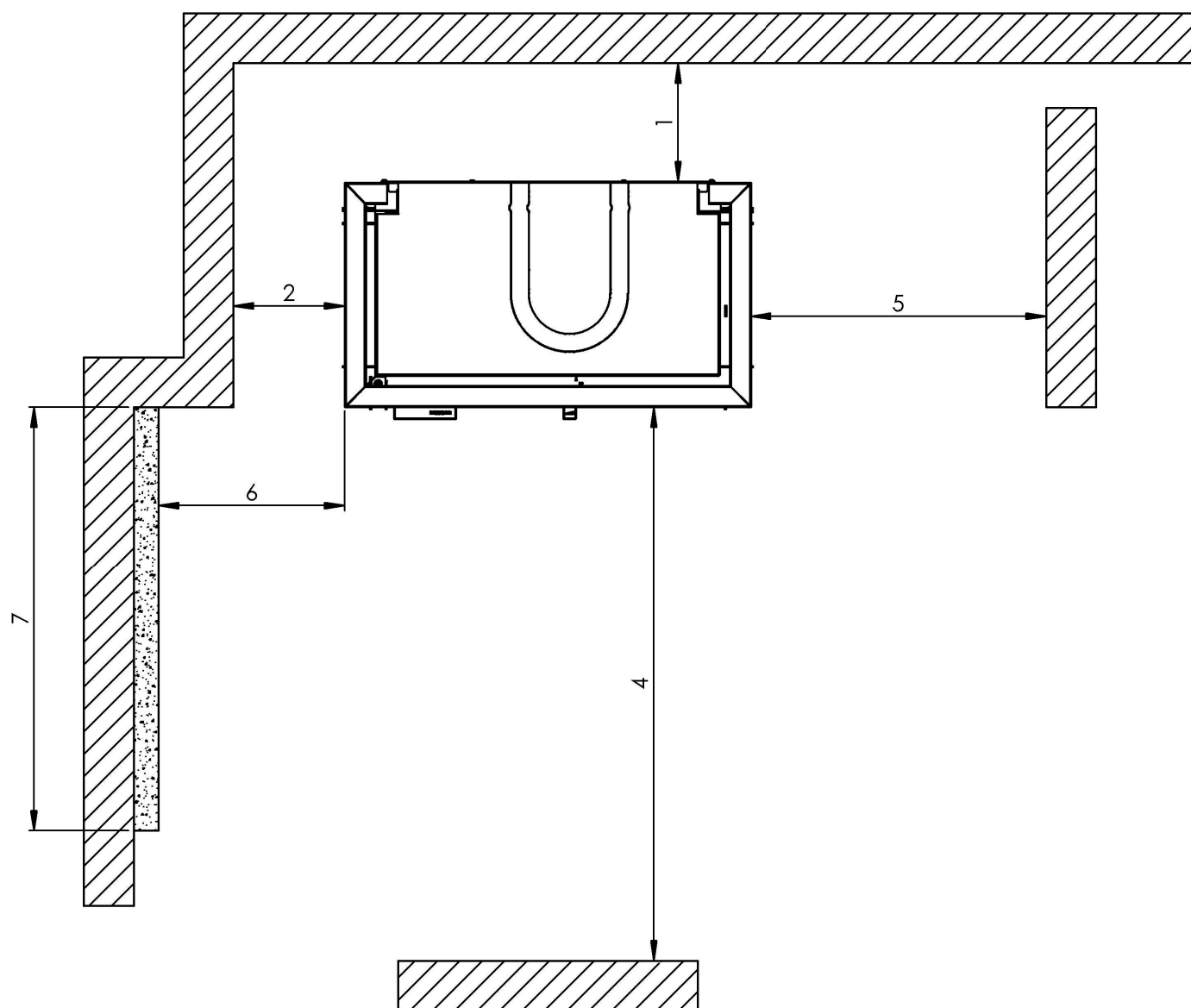
Illustrations regarding distance requirement - right hinged door



Combustible material



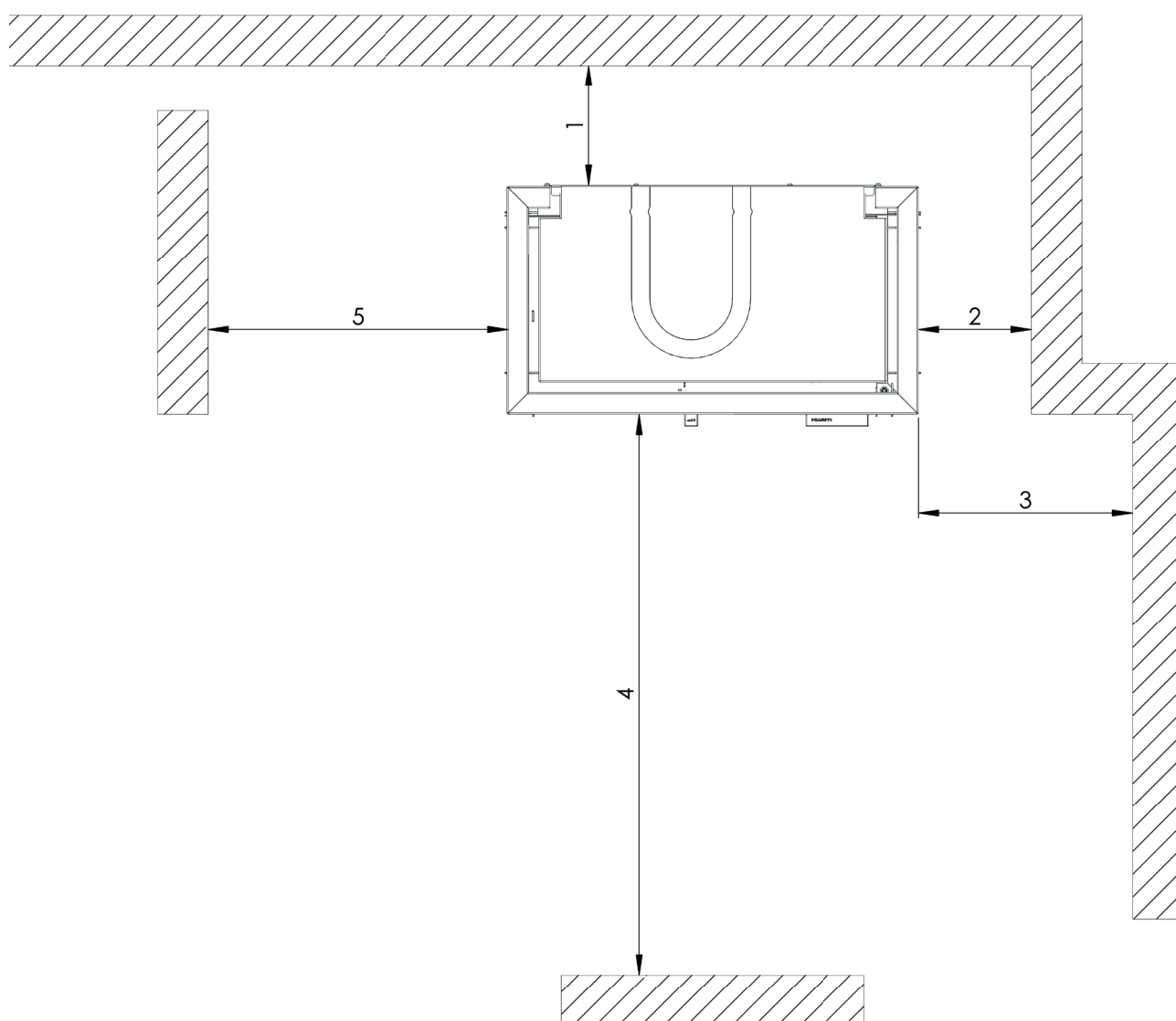
Fire wall - min. 50 mm calcium silicate



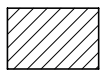
Illustrations regarding distance requirement - left hinged door



Combustible material



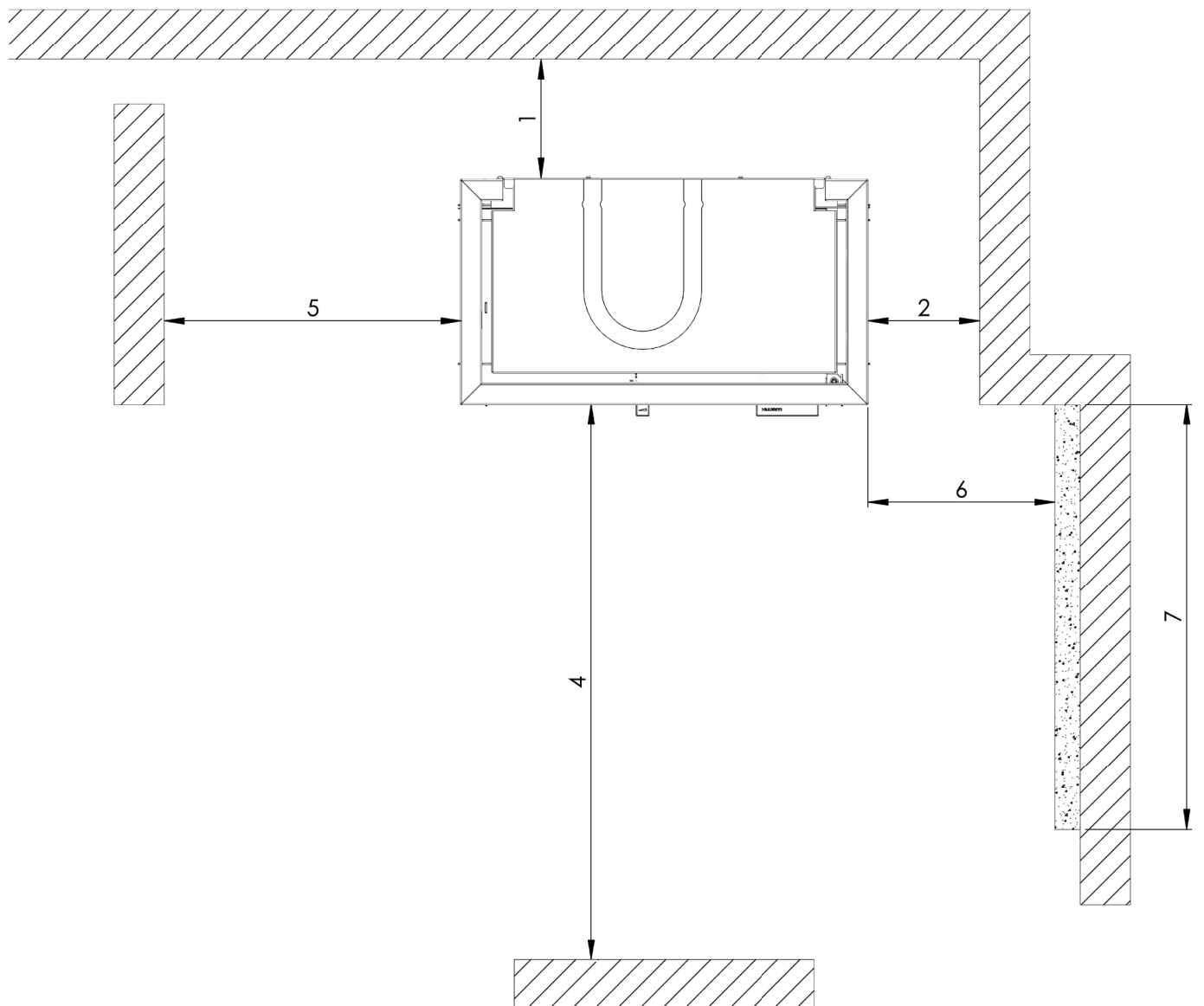
Illustrations regarding distance requirement - left hinged door



Combustible material



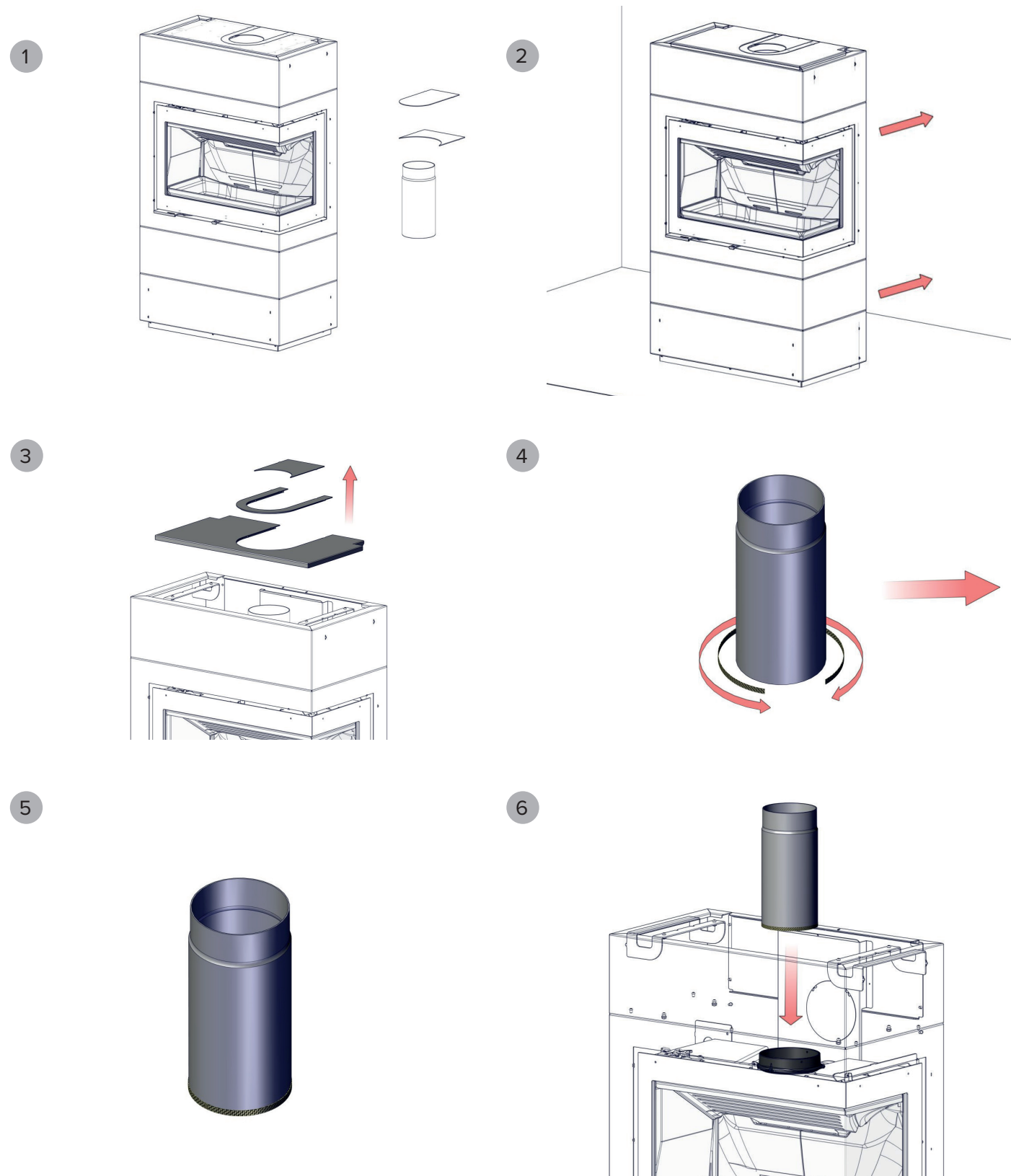
Fire wall - min. 50 mm Calcium Silicate



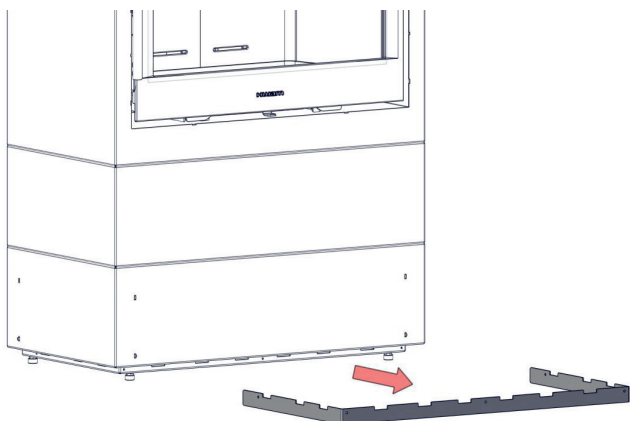
Installation instructions - top outlet

Install the wood-burning stove as shown in the following illustrations. Before starting the installation, any preparations for the installation of a fresh-air system as well as any reinforcement of the floor must be carried out.

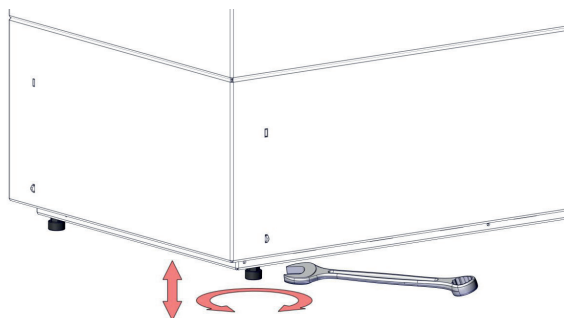
Important: Wear cotton gloves when handling the steel parts of the cladding parts to avoid leaving fingerprints.



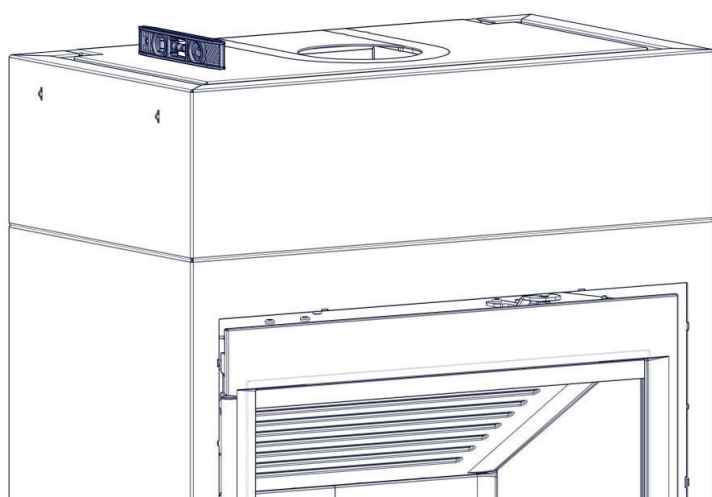
4



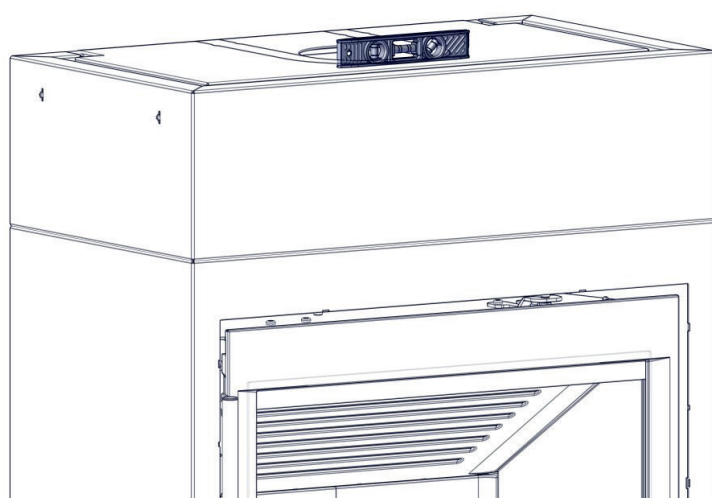
5



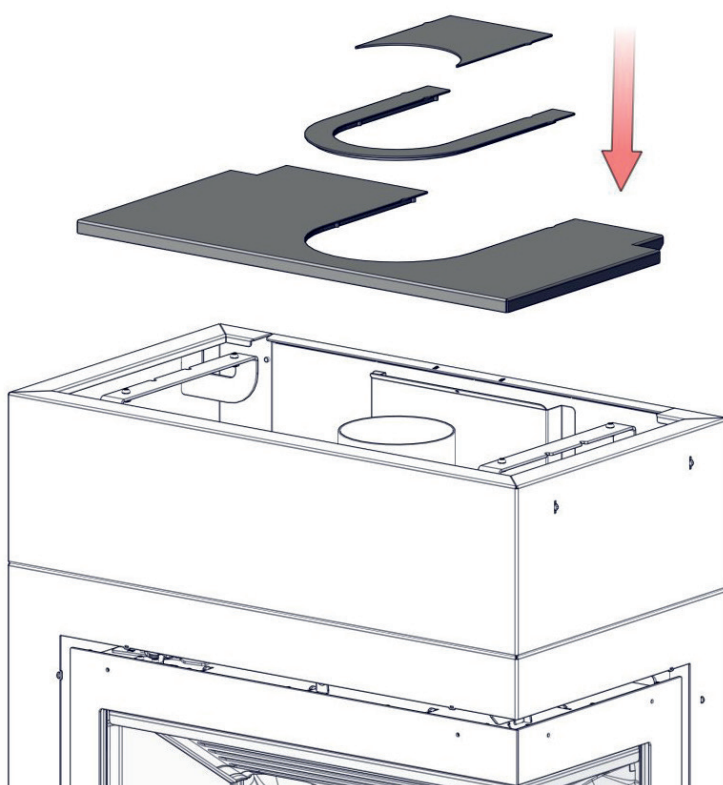
6



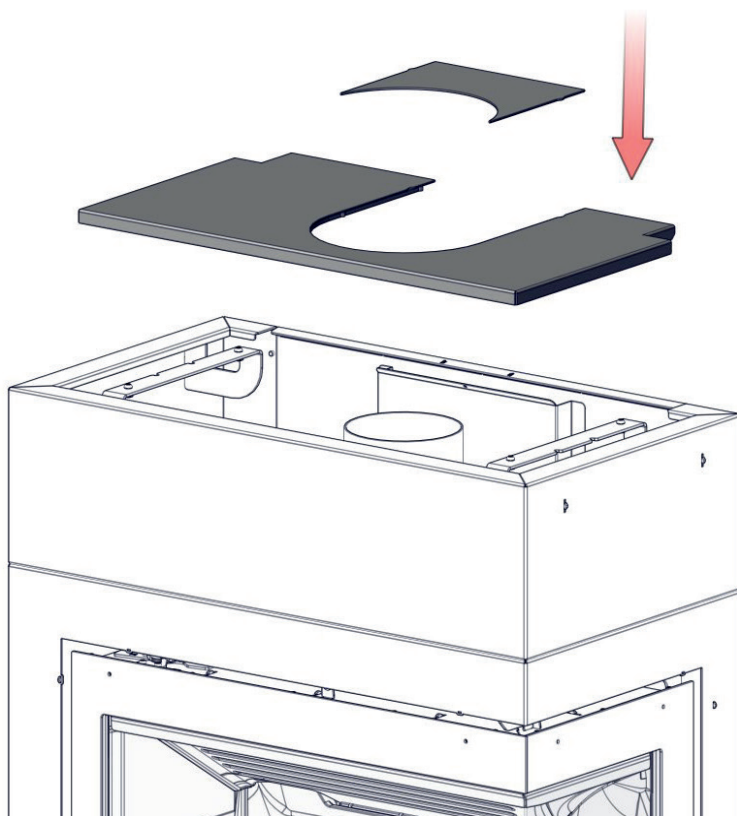
7



- 14 For installation of uninsulated flue gas pipe:



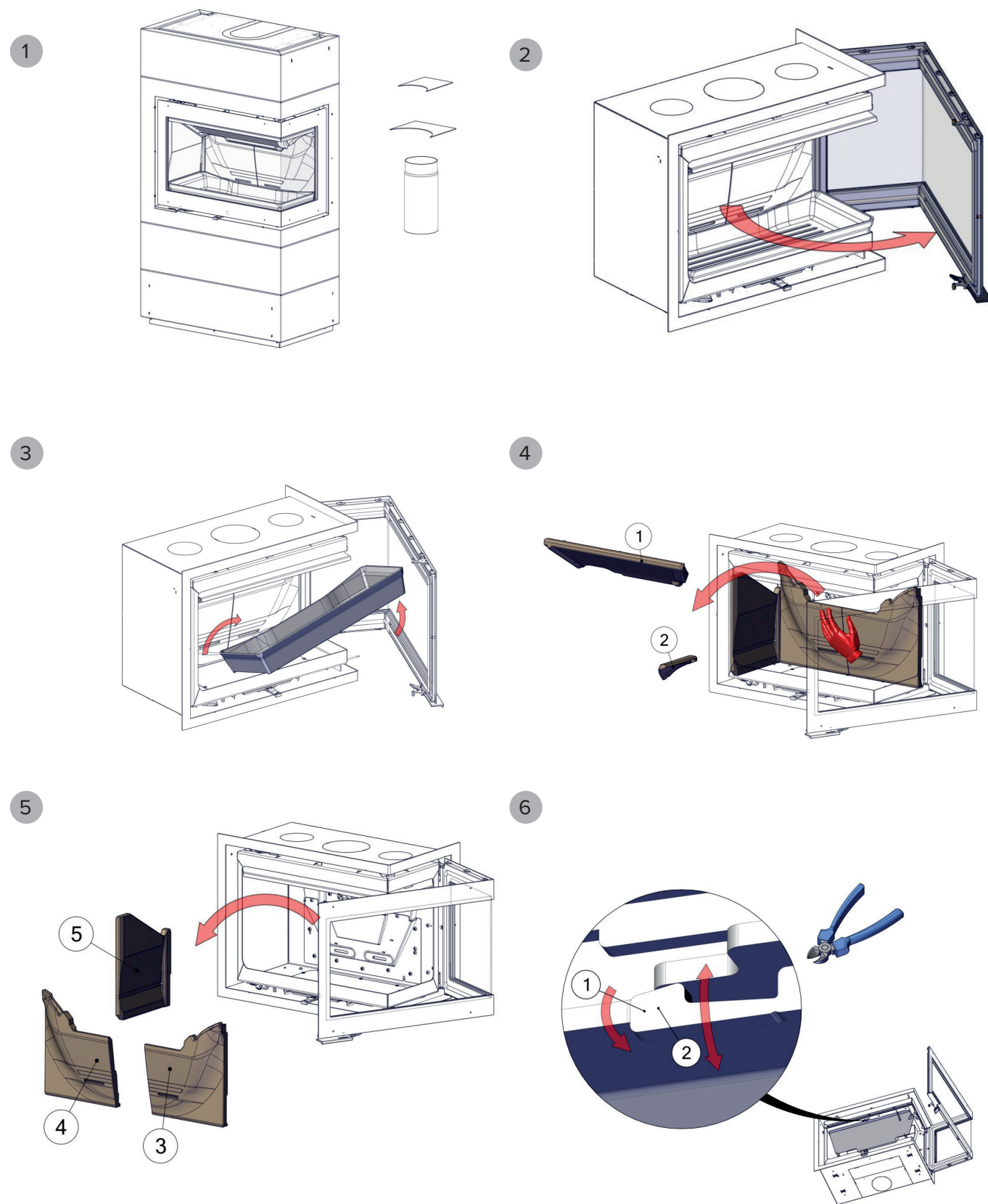
- 15 For installation of insulated flue gas pipe:



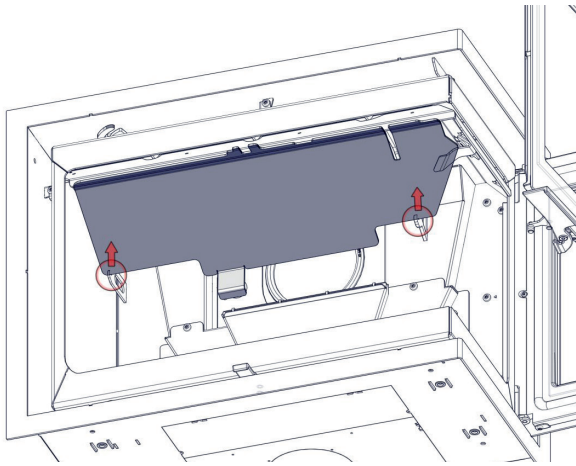
Installation instructions - back outlet

Install the wood-burning stove as shown in the following illustrations. Before starting the installation, any preparations for the installation of a fresh-air system as well as any reinforcement of the floor must be carried out.

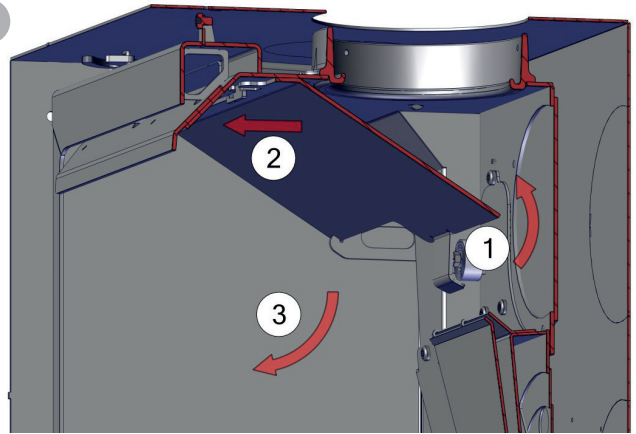
Important: Wear cotton gloves when handling the steel parts of the cladding parts to avoid leaving fingerprints.



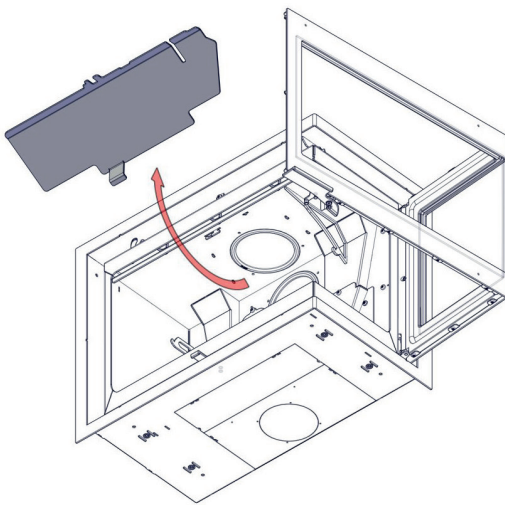
7



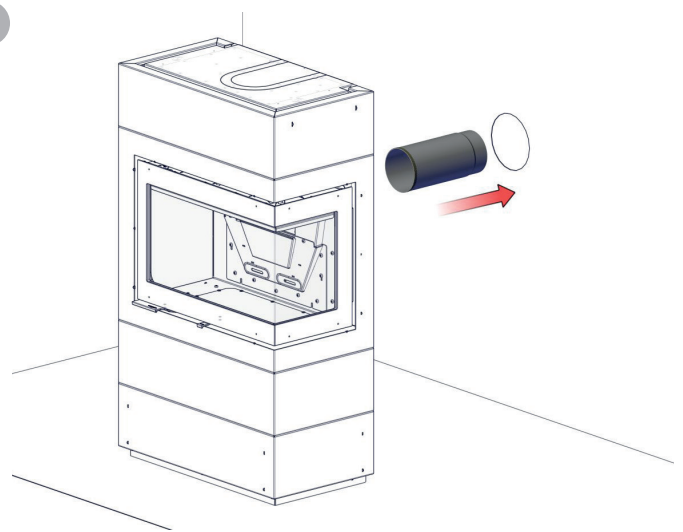
8



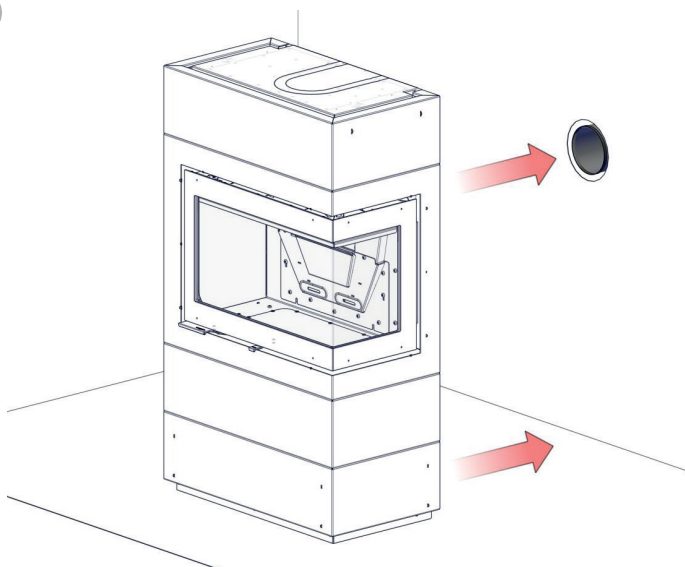
9



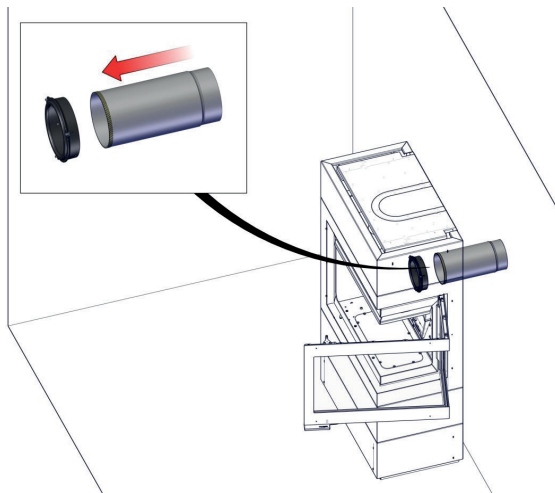
10



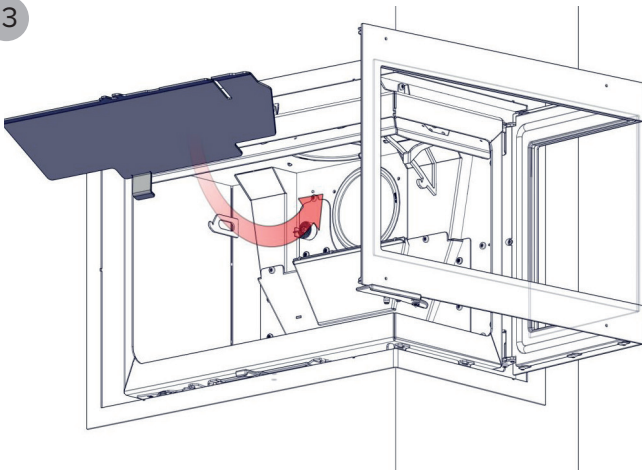
11



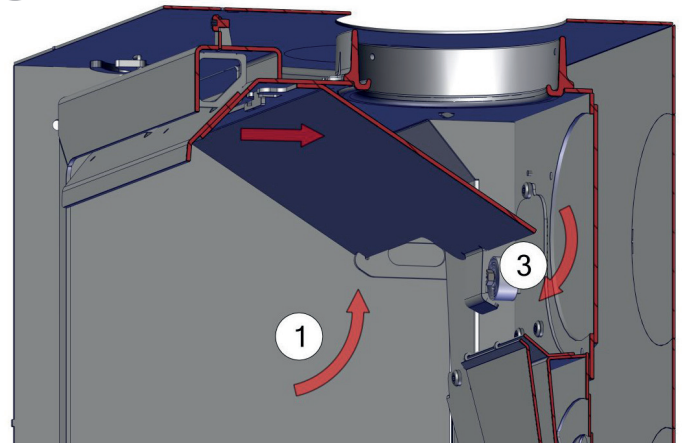
12



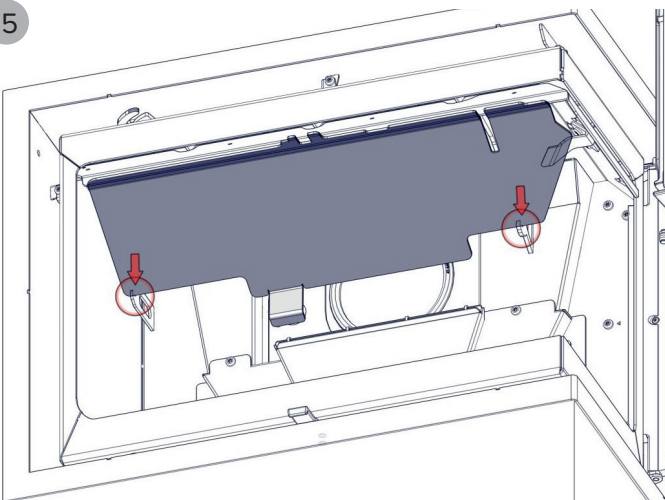
13



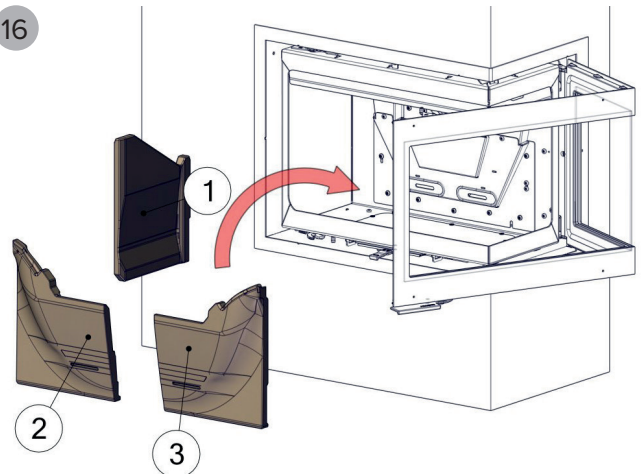
14

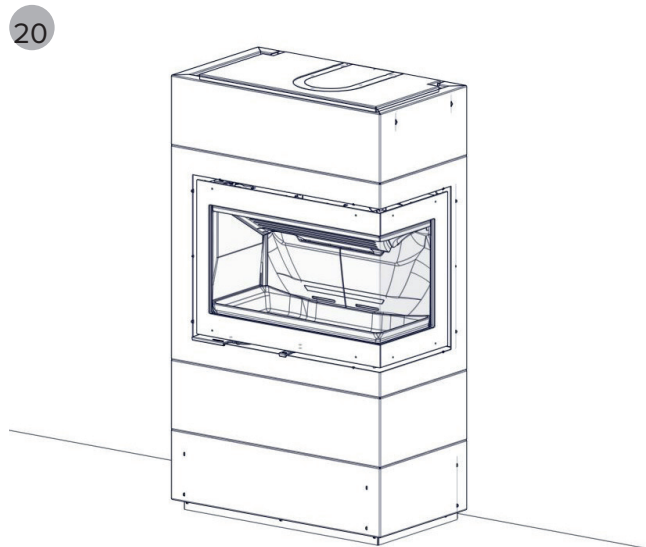
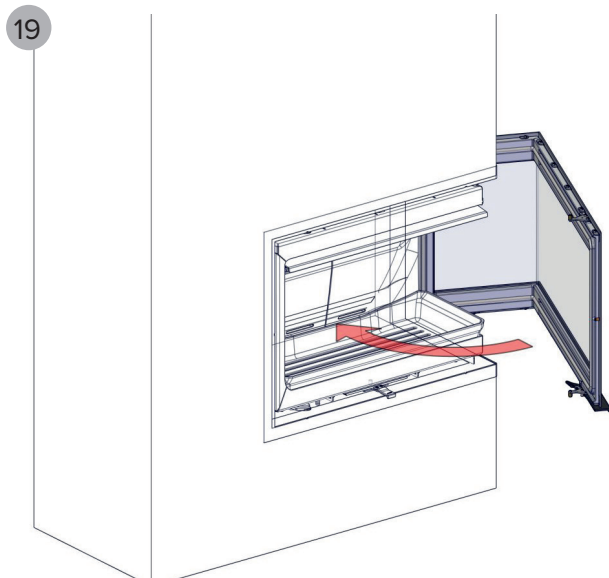
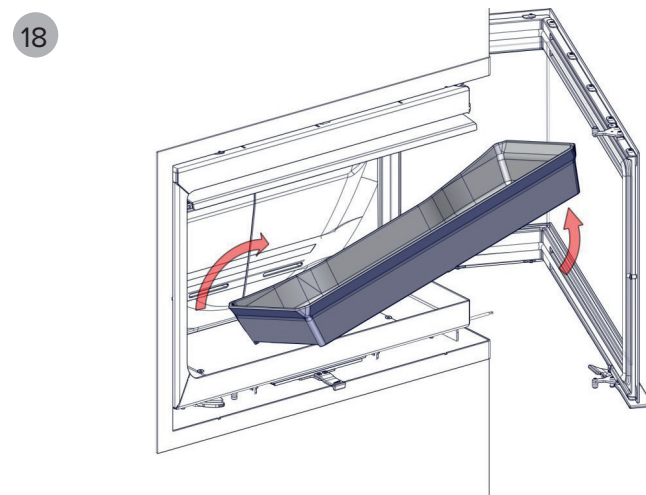
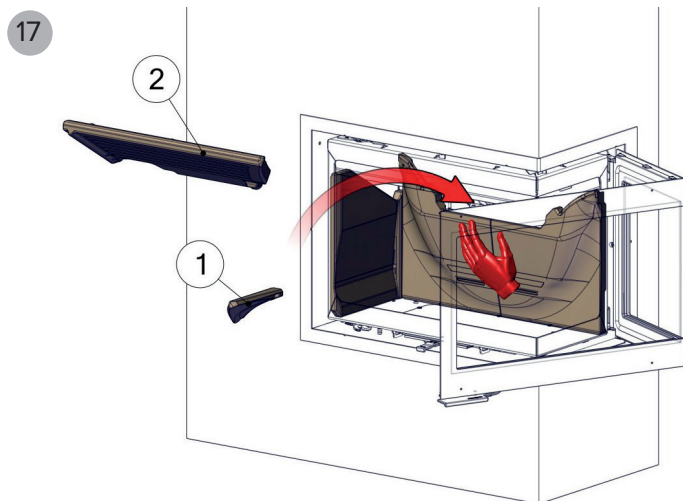


15



16





**Product information on solid fuel local space heaters
according to Commission regulation (EU) 2015/1185**

Model	HWAM 5610, HWAM 5630, HWAM 5650, HWAM 5670
Direct heat output [kW]	7,1
Indirect heating functionality	No
Indirect heat output [kW]	-
Type of heat output/room temperature control	Two or more manual stages, no temperature control

Space heating performance at nominal heat output		
Fuel	Preferred fuel	Seasonal space heating energy efficiency [%]
Wood logs with moisture content 12-18 %	Yes	69
Emissions	mg/m ³ (13% O ₂)	
Particulate matter (PM)	13	
Organic gaseous compounds (OGC)	67	
Carbon monoxide (CO)	1056	
Nitrogen oxides (NO _x)	95	

Characteristics when operating with the preferred fuel only	
Nominal heat output [kW]	7,1
Electric power consumption nominal heat output [kW]	-
Electric power consumption minimum heat output [kW]	-
Electric power consumption standby mode [kW]	-
Useful efficiency at nominal heat output [%]	79
Energy efficiency index	105
Energy efficiency class	A

Specific Precautions during Assembling, Installing & Maintenance:

See installation instructions for more information

Product End-of-Life/Recycling:

To dispose of the stove after the product life has expired, please observe the following information

- Dispose of the items correctly i.e. separate the parts to be disposed of in material groups
- Always dispose of items in a way that is as sustainable as possible and that is in line with the current environmental protection, reprocessing/recycling and disposal technology

